



## **Stellar Phoenix Novell**

Version 3.0

### **User Guide**



### Overview

Stellar Phoenix Novell (NSS) software recovers data from corrupt volume(s) of a crashed Server. Stellar Phoenix Novell (NSS) enables you to access data when volume(s) of a hard disk cannot be mounted. Stellar Phoenix Novell (NSS) - software can save data to another hard disk in cases of corrupt volumes, missing volumes, deleted files, allocation errors and partition loss.

Stellar Phoenix Novell (NSS) can search volumes and pools in a hard disk. All existing pools or volumes are shown by Stellar Phoenix Novell (NSS) when you start recovery. However, you can also find pools or volumes if the required pool or volume is not shown by Stellar Phoenix Novell (NSS).

You can save recovered data to a local hard disk or to an File Transfer Protocol (FTP) server. In addition, you can save all or only required files from the recovered files.

Stellar Phoenix Novell (NSS) can create image of a hard disk or pool. You can use this image to start recovery at any time. Resume recovery allows you to restart recovery by using either scan information file or image file.

#### **Key features of Stellar Phoenix Novell (NSS):**

- Novell recovery when the important file data structure(s) has(have) got damaged
- Novell Netware Recovery when the volumes are segmented
- Support Multi-Disk Drive- IDE, EIDE and SCSI
- Recovery from pool when volume structure is corrupted
- Preview of files
- Interactive user interface with non-demanding nature of prior technical skills
- Structured phase wise analysis for the effective Novell partition recovery
- File masking
- Disk imaging & cloning
- Save scan
- File filter
- Save data in FTP



## Installation Procedure

Before installing the software, ensure that your system meets the minimum system requirements:

### Minimum System Requirements

- **Operating Systems:** Windows Me / NT / 2000 / XP / 2003 / Vista
- **RAM:** 128 MB minimum (256 recommended)
- **Free space required in hard disk:** 40 MB
- **Processor:** Pentium 4 or later

### To install the software:

1. Double-click **Stellar Phoenix Novell.exe** file to start the setup process. The Setup - Stellar Phoenix Novell dialog box opens. Click **Next**.
2. In the License Agreement screen, select **I accept the agreement** option. The Next button will be enabled. Click **Next**.
3. In the Select Additional Tasks screen, check the required check boxes. Click **Next**.
4. In the Select Destination Location screen, provide the path by using Browse button where the setup files will be stored. Click **Next**.
5. In the Start Menu Folder screen, provide the path by using Browse button where the program's shortcuts will be stored. Click **Next**.
6. In the Ready to Install screen, review the settings. Click **Back** to change settings. After confirming the settings, click **Install**. The Installing screen shows the installation process.
7. After completing the process, the Completing the Stellar Phoenix Novell Setup Wizard screen opens. Click **Finish**.

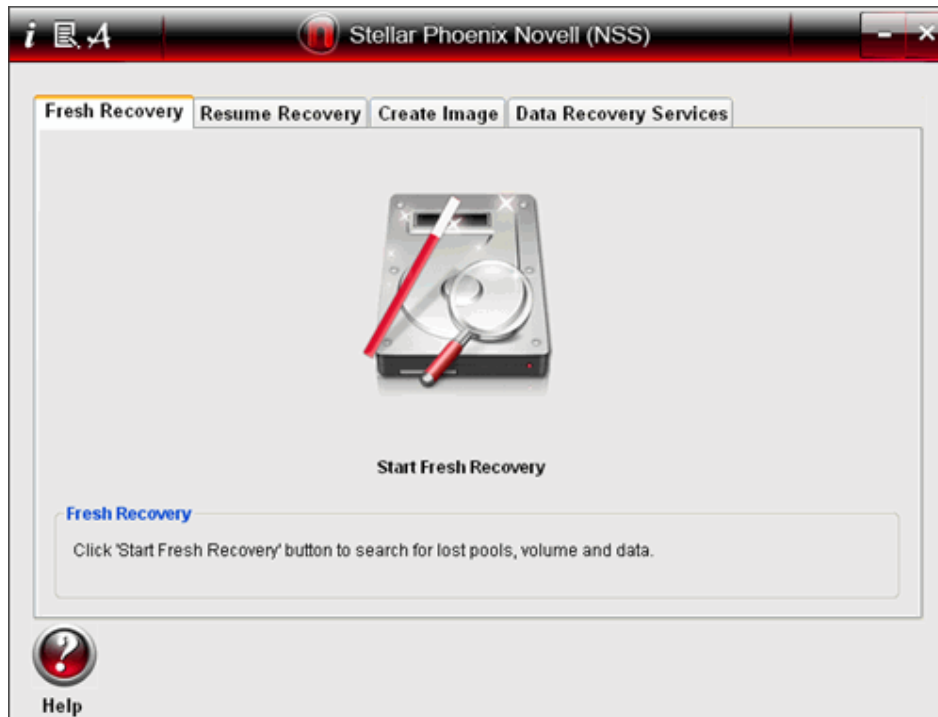


You can clear the **Launch Stellar Phoenix Novell** check box to stop the automatic launch of the software.





### User Interface

Stellar Phoenix Novell (NSS) software has a very easy to use rich Graphical User Interface. Both, technical and non-technical users can use the software easily. Stellar Phoenix Novell (NSS) software's main user interface is as shown below.



- **Fresh Recovery Tab**  
Provides recovery of data from a hard disk, pool or volume. Click **Start Fresh Recovery** to start recovering data.
- **Resume Recovery Tab**  
This allows you to [resume recovery](#) by using scan information file or image file. Image files are created by using create image feature of Stellar Phoenix Novell.
- **Create Image Tab**  
Provides [Create Image](#) and [Disk Cloning](#) feature. You can create image of a hard disk or pool by using Create Image feature. You can create an exact replica of hard disk by using Disk Cloning feature.
- **Data Recovery Services Tab**  
Provides information about the [data recovery services](#) provided by Stellar Information Systems Ltd.

- **Log icon**   
Click this icon to view and save log report created by Stellar Phoenix Novell's processes.

- **About icon**   
Click this icon to read End User License Agreement and general information about the Stellar Phoenix Novell (NSS).

- **Help icon**   
Click this icon to view Help Manual of Stellar Phoenix Novell (NSS).



## How to Order

The software can be purchased by making payments online using a credit card. Please visit <http://www.data-recovery-novell.com/buy-novell-data-recovery.php?Order> for more information and to place an order.

Alternatively, if the demo version is installed then you can register the demo version. To register the demo version click **Help** and select **Order Stellar Phoenix...** to start the registration process.

Once the payment is complete, an activation serial number along with activation details is sent through email. This activation serial number is required to register the software.



## How to Register



If the software is downloaded from <http://www.data-recovery-novell.com/buy-novell-data-recovery.php?Order> (i.e., ESD version), for the full functionality, the product must be registered using Serial Number (received through email after purchasing the product).

If the software is installed using the product installation CD (i.e., BOX version), hardware lock



is mandatory for the functioning of the software that is available with the software kit.

After purchasing the software, you will receive the serial number, which is required to register the software. The serial number will be verified during the registration process and if the serial number is valid then the software will be registered.

The software can be registered in different ways. These are the methods by using which you can register the software:

- Over internet


You should have the serial number, which is received after purchase of the software. On entering the serial number it is verified by license server and on verification the software will be registered.

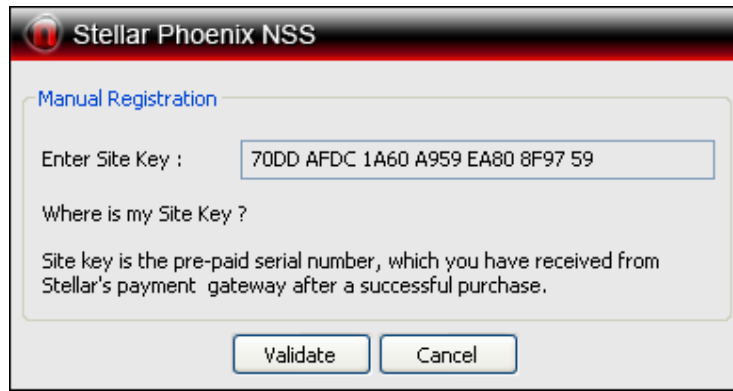
- Manual Activation

You will need to generate a PHX\_REG.txt file and mail the .txt file to [support@stellarinfo.com](mailto:support@stellarinfo.com). After verifying the serial number and purchase details of the software, the site key will be delivered to you at your email address. This site key is used to register the software manually.

### To register the software over Internet:



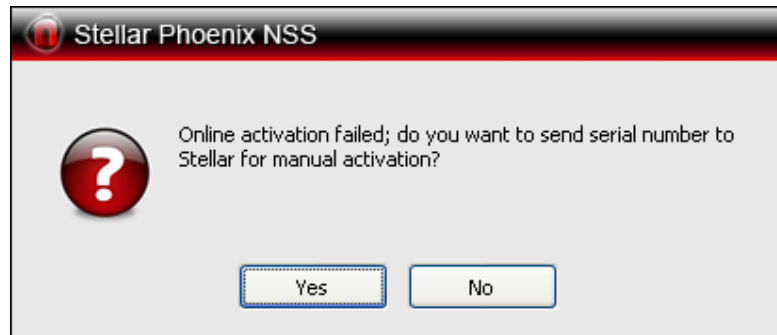
- Click on the Activation icon , click **Activate Stellar Phoenix Novell (NSS) Online**. The Warning dialog box opens, click **OK**.
- In the Welcome to Stellar Phoenix - Electronic Software Registration wizard, click **Next**.
- Type the Serial number (received through email after purchasing the product) in the Serial number text box. Click **Next**.



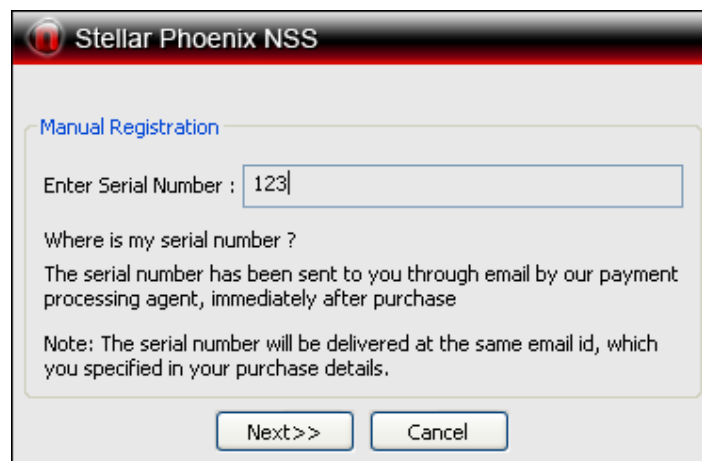
- The software would automatically communicate with license server and register the software. Click **Finish** to complete the registration process.

**To register the software by using manual activation process:**

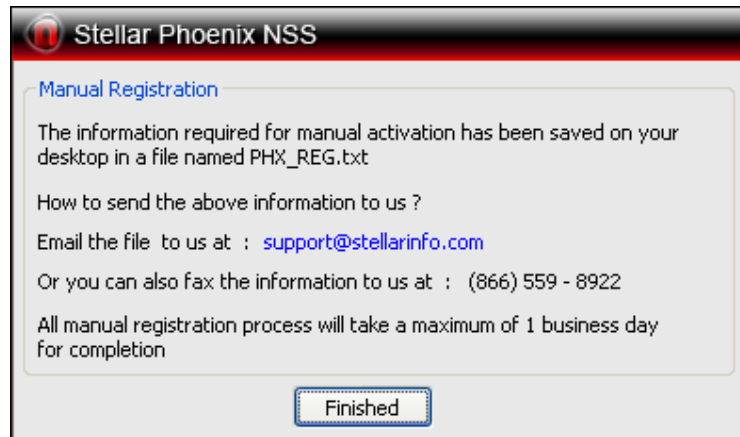
- On the Activation menu, click Activate Stellar Phoenix Novell (NSS) Online. The Warning dialog box opens, click OK.
- In the Welcome to Stellar Phoenix - Electronic Software Registration wizard, click Cancel.
- The Stellar Phoenix Novell (NSS) dialog box opens, click OK.




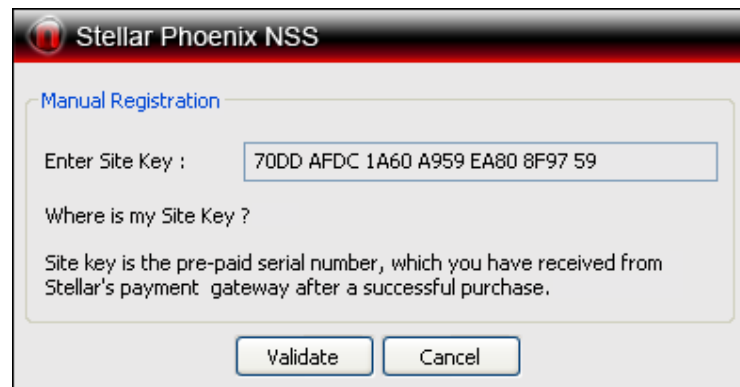
- In the Stellar Phoenix Novell (NSS) -Manual Software ... dialog box, enter the serial number, which is received after the successful purchase of the software. Click **Next**.



- A file named PHX\_REG.txt will be created at your desktop. Email the .txt file to [support@stellarinfo.com](mailto:support@stellarinfo.com) email address. Click **Finished**.



- In reply, you will receive the site key after checking the purchase details. This site key is required to activate the software manually.
- When you receive the site key, open Stellar Phoenix Novell (NSS) and click on the icon , click **Manual Registration**. In the Stellar Phoenix Novell (NSS) dialog box, enter the site key, which is received after sending the PHX\_REG.txt file. Click **Validate**.



The site key is delivered to your email address, which is used to sent the serial number.



### Fresh Recovery

Stellar Phoenix Novell (NSS) allows you to recover data from a hard disk, pool or volume. You can scan any one of these to search and recover data. By default, all pools and volumes existing in a hard disk are shown in the Select Media screen. Select a hard disk, pool or volume and click **Continue** to start the scanning process.





**To know how to recover data from hard disk, pool or volume, view:**

- o Recovering data from hard disk
- o Recovering data from pool
- o Recovering data from volume



## Recovering Data from Hard Disk

### To recover data from hard disk:

1. Under Fresh Recovery tab, select **Start Fresh Recovery**. In the Select Media screen, under Physical Disks tree, all disks, pools and volumes will be listed. Select a hard disk and click **Continue**.
2. Scanning process starts and after completion lists all pools and volumes that are found in the selected hard disk will be listed under the Disk tree. Select either a pool or volume to start recovering data from the selected pool or volume. Click **Continue**.
3. All files that are found after scanning process are shown in the three pane structure. In the left-pane, all folders that are found during scanning process are listed under the Volume name node. Double-click a folder in the left-pane, to view files included in the folder. In the bottom-pane click on a file to preview the file in middle-pane. If preview of a file is not available then it will be shown in hex-viewer in the middle-pane.
4. You can save all or individual files either to local hard disk or to an FTP server.
  - o **To select all files:**
    - o Click **Select All**  icon, and then click **Recover**  icon.
    - o **To select individual files:**
      - 1.2.2. Click a folder in the left pane to view files stored in it.
      - 1.2.3. Check checkboxes of file names, and then click **Recover**  icon.
  - o **To recover selected folders:**
    - o Check the folder name checkbox in the left pane, and then click **Recover**  icon.
5. In the Recovery Destination Option screen, select either **Recover to local drive** or **Recover to FTP server** to save files at local hard disk or to an FTP server respectively. Click **OK**. You can also [apply Filter](#) to save only required files from the selected folder or files. In the Recovery Destination Option screen, click **Filter** to add files types that should be saved. All files having the same extension as of the extension of the file added in the Add box will be saved. All other files will not be saved.

The selected files will be saved at the specified location. Navigate to the destination to view files.







You can use [Mask](#), [Find](#) and [Save Scan](#) options of Stellar Phoenix Novell after the scanning process is completed. Mask option is used to narrow the scan result. A new tree will be created based on the file extensions when you apply mask. You can save the result of the scanning process by using the save scan option. You can restart recovery by using this scan information file later. Find feature is used to search files from the result obtained after the scanning process. By default, all existing pools and volumes created in a hard disk are shown in the Select Media screen. However, scanning process will search and show more pools and volumes other than the pools and volumes listed in the Select Media screen.



## Recovering Data from Pool

### To recover data from pool:

1. Under Fresh Recovery tab, select **Start Fresh Recovery**. In the Select Media screen, under Physical Disks tree, all disks, pools and volumes will be listed. Select a pool and click **Continue**.
2. Scanning process starts and after successful completion of the scanning process all volumes that are found under the selected pool will be listed under the pool name node. In addition, all recovered folders under the selected pool will also be listed. In the left-pane, all folders that are found during scanning process are listed under the Volume name node. Double-click a folder in the left-pane, to view files included in the folder. In the bottom-pane click on a file to preview the file in middle-pane. If preview of a file is not available then it will be shown in hex-viewer in the middle-pane.
3. You can save all or individual files either to local hard disk or to an FTP server.
  - o **To select all files:**
    - o Click **Select All**  icon, and then click **Recover**  icon.
    - o **To select individual files:**
      - 1.2.2. Click a folder in the left-pane to view files stored in it in the middle-pane.
      - 1.2.3. In the middle-pane, check checkboxes of file names, and then click **Recover**  icon.
  - o **To recover selected folders:**
    - o Check the folder name checkbox in the left-pane, and then click **Recover**  icon.
5. In the Recovery Destination Option screen, select either **Recover to local drive** or **Recover to FTP server** to save files at local hard disk or to an FTP server respectively. Click **OK**. You can also [apply Filter](#) to save only required files from the selected folder or files. In the Recovery Destination Option screen, click **Filter** to add files types that should be saved. All files having the same extension as the extension of the file added in the Add box will be saved. All other files will not be saved.



- You can use [Mask](#), [Find](#) and [Save Scan](#) options of Stellar Phoenix Novell after the scanning process is completed. Mask option is used to narrow the scan result. A new tree will be created based on the file extensions when you apply mask. You can save the result of the scanning process by using the save scan option. You can restart recovery by using this scan information file later. Find feature is used to search files from the result obtained after the scanning process. By default, all existing pools and volumes created in a hard disk are shown in the Select Media screen. However, scanning process will search and show more volumes other than the pools and volumes listed in the Select Media screen.



## Recovering Data from Volumes

1. Under Fresh Recovery tab, select **Start Fresh Recovery**. In the Select Media screen, under Physical Disks tree, all disks, pools and volumes will be listed. Select a volume and click **Continue**.
2. Scanning process starts and after successful completion of the scanning process all the recovered data is displayed in a three pane structure. In the left-pane, all folders that are found during scanning process are listed under the Volume name node. Double-click a folder in the left-pane, to view files included in the folder. In the bottom-pane click on a file to preview the file in middle-pane. If preview of a file is not available then it will be shown in hex-viewer in the middle-pane.
3. You can save all or individual files either to local hard disk or to an FTP server.
  - ..1. **To select all files:**
    - ..2. Click **Select All**, and then click **Recover**.
  - o **To select individual files:**
    - ..1. Click a folder in the left-pane to view files stored in it in the middle-pane.
    - ..2. In the middle-pane, check checkboxes of file names, and then click **Recover**.
  - o **To recover selected folders:**
    - o Check the folder name checkbox in the left-pane, and then click **Recover**.
4. In the Recovery Destination Option screen, select either **Recover to local drive** or **Recover to FTP server** to save files at local hard disk or to an FTP server respectively. Click **OK**. You can also [apply Filter](#) to save only required files from the selected folder or files. In the Recovery Destination Option screen, click **Filter** to add files types that should be saved. All files having the same extension as the extension of the file added in the Add box will be saved. All other files will not be saved.



- You can use [Mask](#), [Find](#) and [Save Scan](#) options of Stellar Phoenix Novell after the scanning process is completed. Mask option is used to narrow the scan result. A new tree will be created based on the file extensions when you apply mask. You can save the result of the scanning process by using the save scan option. You can restart recovery by using this scan information file later. Find feature is used to search files from the result obtained after the scanning process.
- If you save individual files or folders then still all folders will be saved at the destination. However, only selected files will be saved. All other folders will be empty.



## Specifying Destination

You can save recovered files either to local hard disk or to an File Transfer Protocol (FTP) server.

### To save recovered files to local hard disk:

- Select **Recover to local drive** option. Click **Browse** to specify the location where files should be saved. Click **OK** twice.

### To save recovered files to FTP Server:

1. Select **Recover to FTP server** option. Click **FTP** Option.
2. Provide the required values such as Server Name/ IP Address, Username and Password.
3. Click **Browse FTP**, select a folder and click **OK** three times.

All files will be saved at specified location.



## Creating Image

You can create image of a hard disk or a pool by using Create Image feature of Stellar Phoenix Novell (NSS). You can recover files from the newly created image after the successful completion of image or later by using resume recovery feature.

The destination where image needs to be saved should have size equal or greater than the selected hard disk or pool. The image file created by using Stellar Phoenix Novell (NSS) is saved as an .img file.

### To create image:

1. Under Create Image tab, select **Create Image** icon.
2. In the Select Drive/Pool box, under Physical Disks tree, select either a hard disk or a pool. The right box labelled as Item Informations shows the size of the selected hard disk or pool, and also starting and ending sectors. Click **Continue**.
3. In the Save Scan dialog box, specify the location where image file should be saved. Enter name of the image in the File Name text box. Click **Save**. The Disk Image Creation screen shows the process of image creation. Symbols box shows the information about current, processed, bad and remaining blocks. The Processing Info box shows the current sector of which image is creating and size of the image that has been created during image creation process.
4. After the successful completion of image creation, click **Continue** to scan for data in the newly created image. You can scan the newly created image at later by using [resume recovery](#) feature.
5. Scanning Data screen lists all the recovered files from the newly created image. Save the required files.



If you stop the image creation process before completion then the image will be created up to the stopped point. You can recover data from that partial image. You can also click **Home** or **Back** icon to skip the scanning process.



## Cloning Hard Disk

Cloning option of Stellar Phoenix Novell (NSS) allows you to create an exact replica of a hard disk. You will need to attach another hard disk for cloning a hard disk. The size of the destination hard disk should be same or greater than the source hard disk.

### To clone a hard disk:

1. Under Create Image tab, select **Clone Disk**.
2. In the Disk Cloning screen, click **Source Disk** list box to select **source disk drive**. Click **Target Disk** list box to select **destination disk drive**.
3. Click **Start Cloning**.



## Resuming Recovery

You can restart recovery either by using a scan information file or by using an image file of a pool or hard disk. Resume recovery feature allows you to restart recovery from last saved point in case of scan information file and start a new recovery in case of hard disk's image.

If you restart recovery by using scan information file then the scan result shown after the previous scanning process will be displayed as it is. This means scanning process will not takes place.

If you restart recovery by using hard disk or pool's image then the scanning process will start again. However, the result of scanning process will be same as obtained after the creation of image, if scanning is performed after the creation of image.

### To resume recovery:

1. Under Resume Recovery tab, click **Browse**. In the Open dialog box, locate and select either a scan information file or image of a hard disk or pool. Click **Open**.
2. Click **Start**. In the Scanning Data screen, all files will be listed. Save the required files.




Resume recovery option provides you the option of saving files at later time. If you have not saved all files during earlier scanning process then you can use resume recovery to save files later. In addition, if scanning process is not performed after the creation of an image then still you can recover and save files by using resume recovery.




### Log Report

You can view, save and clear log report of Stellar Phoenix Novell's processes. Log file is saved as .txt file.

- **To view log report**

- Click  to open StellarPhoenixNSSLog.txt file. All details of Stellar Phoenix Novell process are listed in this .txt file.

- **To save log report**

- 1.2. Click  to open StellarPhoenixNSSLog.txt file.
- 1.3. On the file menu, select **Save Log**. In the Save As dialog box, type a name for the text file in File name textbox. Locate the destination where .txt file should be saved. Click **Save**.

- **To clear Log**

- Click  to open log viewer. Click **Clear Log**.




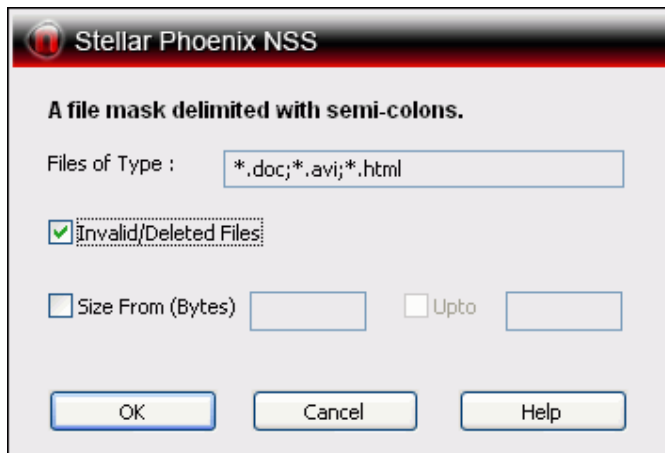
## Applying Mask

Mask allows you to narrow the scan result. After completion of scanning process, all scanned files are listed in a tree structure. You can apply mask to create a new tree structure from the existing tree structure according to file types. The new tree structure will only contain the selected file types. For example, you want to view and recover only Word documents. Scanning process shows you all recovered files in a tree structure. You can apply mask to create a new tree structure that will contain only Word documents.

You can view the original tree structure that is created after scanning process by removing mask. Removing mask will automatically shows the original tree structure that was shown after scanning process.

### To apply mask:

1. When the scanning process is completed, click **Mask**  icon.
2. In the Stellar Phoenix NSS screen, enter values
  - § **Files of type:** Type the extension of required files such as .doc, .avi in the textbox. For example, if you want to include only .doc files than type \*.doc. If you want to include more than file then the format should be **\*.doc;\*.avi;\*.html**. The new tree will only contain files that are specified in this box.




- o Check the required checkboxes:
    - o **Invalid/Deleted Files:** to include invalid or deleted files in the new tree
    - o **Size from (KB):** to search files according to file size. Enter values in the textboxes.
3. Click **OK**. A new tree structure will be shown according to the values defined in mask screen.



Format to create a new tree having more than one file is \*.file extension;\*.file extension;\*.file extension;.....\*.file extension .

### To remove mask:

- Click **Unmask**  icon. Clicking unmask icon automatically shows the original tree structure.




## Applying Filter

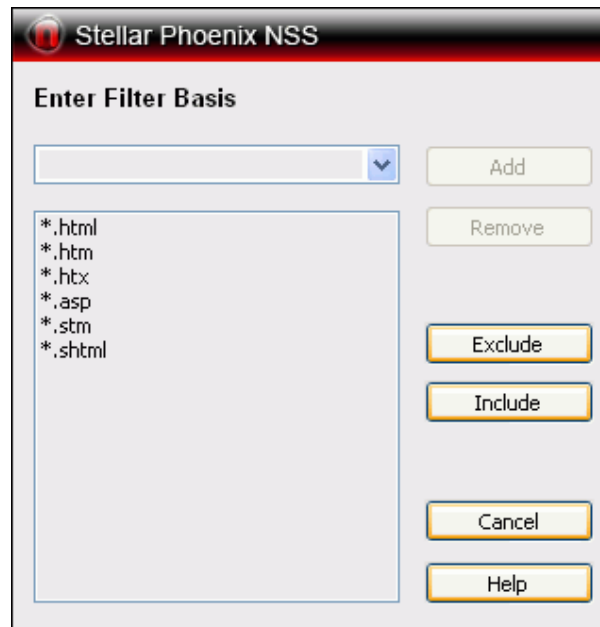
Filter allows you to select and save files on the basis of extensions. You can include, exclude or remove files by applying filter. Scanning process shows every file that is found during the process. You can apply filter to save only required files.

For example, in the Scanned Data screen, you have selected a folder that have different file types such as doc, avi, mp3 to save. Click **Recover**. In the Recovery Destination Option box, click **Filter**. In the Stellar Phoenix NSS box, in the Enter Filter Basis box, type an extension such as .doc. Click **Add**, and then click **Include**. Save the selected files either to local drive or to an FTP server and click **OK**. Files that are having the .doc extension will only be saved. All other files that exists in the folder, which is selected in the Scanned Data screen, for recovery will be excluded.

Filter feature saves only files that has matching extension as added in the Enter Filter Basis box. All other files selected for recovery will be excluded if extensions are different.

### To apply filter:

1. When scanning process is completed, select folders or files that need to be recovered. Click **Recover**  icon, and in the Stellar Phoenix NSS box, click **Filter**.
2. A list of extensions categorized according to file types is available in Enter Filter Basis listbox.
3. Select a group from **Enter Filter basis** listbox. Click **Add**. All extensions under that group will be listed in bottom box.



You can also add a file extension other than the available extensions. Type in the Enter File Basis listbox and click **Add**.


Files that are selected for recovery will be filtered on applying filter. Only those files will be saved that has matching extension as added in the Enter File Basis box. All other files that are selected for recovery will be excluded if their extension is different from extensions added in the Enter File Basis box.

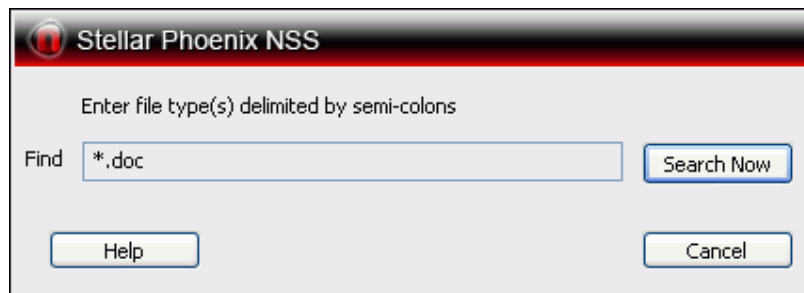


## Finding Files

You can search files from the list of file shown after scanning process. If you want to recover specific files from the list of scan result then finding a file is an appropriate method. You will need to enter the extension of the required file. Files can only be searched according to file extension. You cannot search a file by entering string in find textbox.

### To search files:

1. In the Scanned Data screen, click **Find** .
2. In the Stellar Phoenix NSS screen, type the file extension in the format - \*.file extension in the **Find** textbox. Click **Search Now**. For example, to search .doc files, type \*.doc in the Find textbox.



3. File having the same extension as entered in the Find textbox will be highlighted in the bottom pane. Press **F3** to highlight the next file that has the same extension.



The text should be entered in the format \*.file extension in the Find textbox.




## Saving Scan Information

You can save scan result of any scanning process as an image (.img) file. You can save scan result of a complete or incomplete recovery process. If you stopped a scanning process, you can save scan information up to that point. However, you should perform complete scan, and then save scan result.

Saving scan information saves your time. Since, you will not need to scan the same drive again. You can resume recovery by selecting the image file.

### To save scan information:

1. Click **Save Scan**  icon.
2. In the Save scan information dialog box, browse to the location where image file should be saved. Type the name of the image file in the File name textbox. Click **Save**.



You will also be prompted to save scan information when you click **Back, Home** button or close Stellar Phoenix Novell after a completed or incomplete scanning process.



## Copyright

Stellar Phoenix Novell (NSS) software, accompanied user manual and documentation are copyright of Stellar Information Systems Ltd., with all rights reserved. Under the copyright laws, this user manual cannot be reproduced in any form without the prior written permission of Stellar Information Systems Ltd. No Patent Liability is assumed, however, with respect to the use of the information contained herein.

**Copyright © 1995-2009 by Stellar Information Systems Ltd. INDIA**



## Disclaimer

The Information contained in this manual, including but not limited to any product specifications, is subject to change without notice.

**STELLAR INFORMATION SYSTEMS LTD PROVIDES NO WARRANTY WITH REGARD TO THIS MANUAL OR ANY OTHER INFORMATION CONTAINED HEREIN AND HEREBY EXPRESSLY DISCLAIMS ANY IMPLIED WARRANTIES OF MERCHANTABILITY OR FITNESS FOR ANY PARTICULAR PURPOSE WITH REGARD TO ANY OF THE FOREGOING STELLAR INFORMATION SYSTEMS LTD ASSUMES NO LIABILITY FOR ANY DAMAGES INCURRED DIRECTLY OR INDIRECTLY FROM ANY TECHNICAL OR TYPOGRAPHICAL ERRORS OR OMISSIONS CONTAINED HEREIN OR FOR DISCREPANCIES BETWEEN THE PRODUCT AND THE MANUAL. IN NO EVENT SHALL STELLAR INFORMATION SYSTEMS LTD, BE LIABLE FOR ANY INCIDENTAL, CONSEQUENTIAL SPECIAL, OR EXEMPLARY DAMAGES, WHETHER BASED ON TORT, CONTRACT OR OTHERWISE, ARISING OUT OF OR IN CONNECTION WITH THIS MANUAL OR ANY OTHER INFORMATION CONTAINED HEREIN OR THE USE THEREOF.**



## License Agreement

Stellar Phoenix Novell (NSS)

Copyright © 1995-2009 by Stellar Information Systems Ltd. INDIA

[www.stellarinfo.com](http://www.stellarinfo.com)

All rights reserved.

All product names mentioned herein are the trademarks of their respective owners.

This license applies to the standard-licensed version of Stellar Phoenix Novell (NSS).

### Your Agreement to this License

You should carefully read the following terms and conditions before using, installing or distributing this software, unless you have a different license agreement signed by Stellar Information Systems Ltd.

If you do not agree to all of the terms and conditions of this License then do not copy, install, distribute or use any copy of Stellar Phoenix Novell (NSS) with which this License is included, you may return the complete package unused without requesting an activation key within 30 days after purchase for a full refund of your payment.

The terms and conditions of this License describe the permitted use and users of each Licensed Copy of Stellar Phoenix Novell (NSS). For purposes of this License, if you have a valid single-user license, you have the right to use a single Licensed Copy of Stellar Phoenix Novell (NSS). If you or your organization has a valid multi-user license, then you or your organization has the right to use up to a number of Licensed Copies of Stellar Phoenix Novell (NSS) equal to the number of copies indicated in the documents issued by Stellar when granting the license.

### Scope of License

Each Licensed Copy of Stellar Phoenix Novell (NSS) may either be used by a single person or used non-simultaneously by multiple people who use the software personally installed on a single workstation. This is not a concurrent use license.

All rights of any kind in Stellar Phoenix Novell (NSS), which are not expressly granted in this license, are entirely and exclusively reserved to and by Stellar Information Systems Ltd. You may not rent, lease, modify, translate, reverse engineer, decompile, disassemble or create derivative works based on Stellar Phoenix Novell (NSS) nor permit anyone else to do so. You may not make access to Stellar Phoenix Novell (NSS) available to others in connection with a service bureau, application service provider or similar business nor permit anyone else to do so.

### Warranty Disclaimers and Liability Limitations.

Stellar Phoenix Novell (NSS) and all accompanying software, files, data and materials are distributed and provided AS IS and with no warranties of any kind, whether expressed or implied. In particular, there is no warranty for the quality of data recovered. You acknowledge that good data processing procedure dictates that any program including Stellar Phoenix Novell (NSS) must be thoroughly tested with non-critical data before there is any reliance on it and you hereby assume the entire risk of all use of the copies of Stellar Phoenix Novell (NSS) covered by this License. This disclaimer of warranty constitutes an essential part of this License.

In addition, in no event does Stellar authorize you or anyone else to use Stellar Phoenix Novell (NSS) in applications or systems where its failure to perform can reasonably be expected to result in a significant physical injury or in loss of life. Any such use is entirely at your own risk and you agree to hold Stellar harmless from any and all claims or losses relating to such unauthorized use.

## **General**

This License is the complete statement of the agreement between the parties on the subject matter and merges and supersedes all other or prior understandings, purchase orders, agreements and arrangements. This License shall be governed by the laws of the State of Delhi, India. Exclusive jurisdiction and venue for all matters relating to this License shall be in courts and for a located in the State of Delhi, India and you consent to such jurisdiction and venue. There are no third party beneficiaries of any promises, obligations or representations made by Stellar herein. Any waiver by Stellar of any violation of this License by you shall not constitute nor contribute to a waiver by Stellar of any other or future violation of the same provision or any other provision of this License.

**Copyright ©1995-2009 by Stellar Information Systems Ltd. All rights reserved.**



## Trademarks

Stellar Phoenix Novell (NSS)® is a registered trademark of Stellar Information Systems Ltd.

Windows 2000 Server®, Windows XP®, Windows 2003® and Windows Vista® are registered trademarks of Microsoft® Corporation Inc.

All Trademarks Acknowledged.

All other brands and product names are trademarks or registered trademarks of their respective companies.



## Technical Support

Our Technical Support professionals will give solutions for all your queries related to Stellar Products.

You can either Call Us or Go Online to our support section <http://stellarinfo.com/esupport/users/kb.php>

<b>Support Helpline</b> <b>Monday to Friday [ 24 Hrs. a day ]</b>	
USA (Toll free - Pre Sales Queries)	1-866-554-2512
USA (Post Sales Queries)	1-315-220-6245
UK (Europe)	+44-207-993-2293
Germany	+49-180-110-105-0051
Worldwide	+91-921-395-5509
Skype Id	stellarsupport
Email Orders	<a href="mailto:orders@stellarinfo.com">orders@stellarinfo.com</a>

## Online Help

- [Chat Live](#) with an Online technician
- Search in our extensive [Knowledge Base](#)
- [Submit Ticket](#) (If our Knowledge Base does not answer your question)
- Login and view [Ticket Status](#) (If you already have a valid Ticket with you)
- [Download Documents](#) on Product Usage ( For Registered members only, i.e, user with login ID. If you are an unregistered user, please visit <http://stellarinfo.com/esupport/users/login.php> to create login ID)



## About Stellar

Stellar Information Systems Ltd. is a trusted name in the field of Data Recovery and Data Protection Software for more than a decade.

We provide the widest range of Data Recovery Products. Our range includes Data Recovery Software for almost all Operating Systems and File Systems.

### **Product line:**

#### **Data Recovery**

A widest range of data recovery software that helps you recover your valued data lost after accidental format, virus problems, software malfunction, file/directory deletion, or even sabotage!. [More Info >>](#)

#### **File Recovery**

The most comprehensive range of file undelete and unerase software for Windows and MS office repair tools. [More Info >>](#)

#### **Email Recovery**

A wide range of mail recovery, mail repair and mail conversion applications for MS Outlook, MS Outlook Express and MS Exchange useful in instances of data loss due to damages and corruption of Email. [More Info >>](#)

#### **Data Protection**

A wide range of Prevent Data Loss, Data backup and Hard Drive Monitoring Applications to ensure complete data protection against hard drive crash. [More Info >>](#)

#### **Data Sanitization**

Data cleanup and file eraser utility can delete selected folders, groups of files, entire logical drives, System Traces & Internet traces. Once the data have been removed using Stellar Wipe - Data File eraser utility, it is beyond recovery limits of any Data Recovery Software or utility. [More Info >>](#)

For more information about us, please visit [www.stellarinfo.com](http://www.stellarinfo.com)

---