



Installation Guide

Stellar Phoenix® (BSD®) 1.0

Data Recovery Software for UFS drives

Supports (OpenBSD, NetBSD, FreeBSD)

Stellar Phoenix is a registered trademark of Stellar Information Systems Ltd., All Trademarks Acknowledged.

Overview

According to Murphy's Law of Data Loss, "The probabilities of a hard-disk crash increase with the number of days since the drive was last backed up."

No hard disk drive is ever completely safe from crashing, and losing all the important data on it. A disk drive can be damaged due to a number of causes such as virus attack, voltage glitches, software malfunction, hard disk format, accidental file/directory deletion, human error or even sabotage. Such events cause corruption or damage to the disk drive, and make the data completely inaccessible to the user.

In most cases, retrieval of such lost data is practically impossible, and this can mean grave losses to the user. The user has to rebuild his files from previous backups, and if improper or no backup has been taken, even construct the information again from scratch. In today's age of information technology, data represents time as well as money, and such a loss of data could be a catastrophic event.

This is precisely why a tool like Stellar Phoenix comes in handy to recover your lost data. Stellar Phoenix is a unique product, which allows you to recover precious data from inaccessible hard drives, which have been damaged due to a variety of reasons like

- Accidental format
- Partition loss
- Virus related corruption
- File/directory deletion

How Stellar Phoenix works?

Stellar Phoenix is a NON-DESTRUCTIVE and READ-ONLY software. It will recover your data and copy it to another destination a removable drive, another working partition, another hard drive, a floppy diskette or a network volume.

Stellar Phoenix is very easy to use. The software's fully automated wizard will walk you through the simple steps:

Evaluate - Phoenix identifies the device and locates all partition(s) on the inaccessible drive and presents them in a list.

Analysis - It examines the remains of file structure (Super Block, Inodes) and the data area of the inaccessible drive and works the best path out to recover your files and directories.

Recover - All recoverable files and directories are presented in a tree structure. You can select your data files and directories and move the data to a safe location.

NOTE: *If you hear any strange noises (grinding or clicking) coming from your hard drive this might be an indication of a hardware/physical problem. Continuing to operate your system may damage your hard drive beyond repair and/or cause irretrievable data loss. If you suspect hardware problems visit :*

<http://www.stellarinfo.com/data-recovery-services.htm>

System Requirements

- Pentium-class processor.
- 64 MB RAM (128 MB recommended).
- Windows 9x/ME, Windows NT 3.51 and above, or Windows 2000 / XP / 2003.
- 5 MB of free space (Required for Installation).

Connecting IDE Drives

Setting up Stellar Phoenix and recovering data from a damaged disk drive is a very easy and simple procedure.

You need a working computer with a drive having enough free space to store your recovered data.

Identify a PC that confirms to the [System Requirements](#) and has a drive that has free space to store your recovered data.

Once you have found a system that confirms to the system requirements, verify that the drive in the PC is connected on the Primary Channel as Master.

You can connect the drive as:

- Slave on the primary channel OR AS
- Master or Slave on the secondary channel

The procedure for connecting the drive is detailed in the [next section](#).

Note: Take the help of a support executive in your office or your maintenance engineer if you are not comfortable in connecting the drives.

Attaching Disk

There are three steps:

- Set the jumpers on the hard drive or CD ROM
- Plug and screw the drive in
- Boot the computer up and make sure the drive is detected

Step 1: Setting the drive up

Lets take a look at the back of a hard disk drive to see the jumpers and IDE cable connectors.



A = This is the IDE cable plug. Attach one end of the cable here and the other goes into the motherboard. Remember that the end plug of the cable is the master and the middle plug is the slave. There is a notch that prevents incorrect insertion.

B = These are the jumper pins. Setup your drive as the master. The diagram for this jumper configuration should be on a sticker on the hard drive.

C = This is the power plug. Plug in the power cable from your power supply here.

Here is a picture of an IDE cable:



The master plug is marked with a red arrow. The other end of the cable plugs into the motherboard while the middle plug is for drives in the "slave" configuration.

You can have a "master" and a "slave" on the same cable. That is the whole point of the system!

Another option is to set the drive to "cable select" where it will adjust itself to whatever plug you attach it to. Not all drives support this however.

Step 2: Installing the drive into the case

Here is a picture of a couple of hard drives installed in a case. The power and IDE cables have been attached.



Simply screw in the drive to secure it in the case. It is time to make sure your system accepts your new drive.

Step 3: Setting up your system

Now you must enter the system BIOS and make sure the appropriate IDE channel is set to AUTO, in order to autodetect the drives. Most motherboards ship with IDE channels set to AUTO by default.

To enter the system BIOS press delete or F2 shortly after powering the system on. Simply search around until you reach the IDE menu. Remember to save when you exit the BIOS.

Now when the computer powers up the drive should be detected with it's given size.

Once you have attached a drive, you are ready to install the software on a working disk.

Installation

The software should be installed on a Windows® machine and the crashed drive (UFS) should be connected to the machine as secondary disk or as disk 2, considering the Windows® drive as disk 1.

Run setup.exe from Stellar Phoenix software CDROM or diskette. If you have downloaded Stellar Phoenix from www.stellarinfo.com or a download engine, run the setup file from Windows Explorer to begin the installation process.

Note : Make sure you are logged in as administrator before initializing setup, as the software installation requires local admin rights in Windows NT/2000/XP.

Setup starts to install the software, creates a desktop shortcut and creates an entry in the Program groups menu. The default path where software is installed is *C:\Program Files\Stellar Phoenix (BSD) 1.0*

Also, creates an entry in the 'Add/Remove Programs' group for software unistallation.

NOTE:

Do not install Stellar Phoenix to the partition from which you are trying to recover data. This may result in your lost data getting overwritten and could also cause permanent damage.

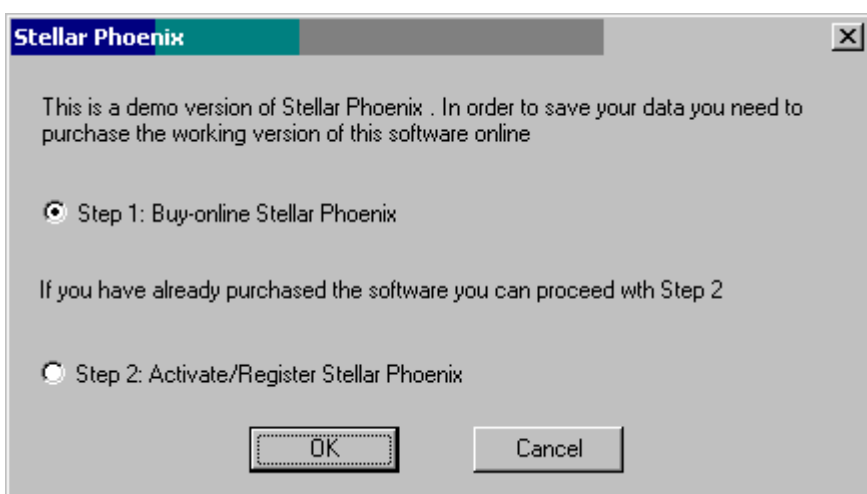
How to Order ?

Order Online:

You can purchase the software by making payments online through credit card. Please visit <http://www.stellarinfo.com/disk-recovery-prices.htm> to have a look at the pricing details and to place the order through credit card.

otherwise

Run the demo version of the software on the machine where you want to install the software, then analyse the crashed drive. Once you select a recovery option i.e. 'Recover selected', 'Recover Deleted' or 'Recover All', the software would launch the wizard as shown below, if the product is not registered.



Step1: If you haven't purchased the product, select the 'Step1' option and press 'OK' you would be given an option to purchase the software online using Credit Card. Once you have made the purchase you would receive the payment confirmation from the payment gateway, and you would get an email having your serial number for authorization.

Step2: Once you have received the serial number select the 'Step2' option and press 'OK'. A screen as shown below would appear. You can directly select the 'Step2' option, if you have already completed the purchasing process and you have the serial number ready with you.

Serial Number : This is the pre-paid key, which you would use to activate the product or to get the unlock code.

Site-Key : It is the unlocking code for the software.

Site-Code : It is the unique number for the machine where Stellar Phoenix is installed. This is required when you are activating the product using manual activation.

How to Activate?

Stellar Phoenix software license is available for instant delivery over the internet by means of electronic software registration.

Once you place the order online you would receive, a serial number.

This serial would be emailed to you by our payment processing agent.

Upon entering the serial number, the software registration wizard would automatically complete the activation process.

If the software is unable to get activated, then you need to check your firewall settings, else you can also activate the product using manual activation method.

Note : All Manual registration process will take a maximum of 1 business day for completion

Copyright Notice

Stellar Phoenix (BSD) software, accompanied user manual and documentation are copyright of Stellar Information Systems Ltd., with all rights reserved. Under the copyright laws, this user manual cannot be reproduced in any form without the prior written permission of Stellar Information Systems Ltd. No Patent Liability is assumed, however, with respect to the use of the information contained herein.

© 1995 - 2010 Stellar Information Systems Ltd. All rights reserved.

Disclaimer Notice

The Information contained in this manual, including but not limited to any product specifications, is subject to change without notice.

STELLAR INFORMATION SYSTEMS LTD PROVIDES NO WARRANTY WITH REGARD TO THIS MANUAL OR ANY OTHER INFORMATION CONTAINED HEREIN AND HEREBY EXPRESSLY DISCLAIMS ANY IMPLIED WARRANTIES OF MERCHANTABILITY OR FITNESS FOR ANY PARTICULAR PURPOSE WITH REGARD TO ANY OF THE FOREGOING STELLAR INFORMATION SYSTEMS LTD ASSUMES NO LIABILITY FOR ANY DAMAGES INCURRED DIRECTLY OR INDIRECTLY FROM ANY TECHNICAL OR TYPOGRAPHICAL ERRORS OR OMISSIONS CONTAINED HEREIN OR FOR DISCREPANCIES BETWEEN THE PRODUCT AND THE MANUAL. IN NO EVENT SHALL STELLAR INFORMATION SYSTEMS LTD, BE LIABLE FOR ANY INCIDENTAL, CONSEQUENTIAL SPECIAL, OR EXEMPLARY DAMAGES, WHETHER BASED ON TORT, CONTRACT OR OTHERWISE, ARISING OUT OF OR IN CONNECTION WITH THIS MANUAL OR ANY OTHER INFORMATION CONTAINED HEREIN OR THE USE THEREOF.

Trademarks

Stellar Phoenix® (BSD™)® is a registered trademark of Stellar Information Systems Ltd.

Windows' 95® , Windows' 98® , Windows' ME® ,
Windows' NT® , Windows' 2000 Server® , Windows' 2000 Advanced Server® , Windows' 2003 Server® ,
Windows' XP® and MS-DOS are registered trademarks of Microsoft Corporation.

All Trademarks Acknowledged.

All other brand and product names are trademarks or registered trademarks of their respective companies.

License

License Agreement - Stellar Phoenix (BSD)

Stellar Phoenix (BSD)

Copyright © 1995-2010 by Stellar Information Systems Ltd. INDIA

www.stellarinfo.com

All rights reserved.

All product names mentioned herein are the trademarks of their respective owners.

This license applies to the standard-licensed version of Stellar Phoenix (BSD).

Your Agreement to this License

You should carefully read the following terms and conditions before using, installing or distributing this software, unless you have a different license agreement signed by Stellar Information Systems Ltd.

If you do not agree to all of the terms and conditions of this License then do not copy, install, distribute or use any copy of Stellar Phoenix (BSD) with which this License is included, you may return the complete package unused without requesting an activation key within 30 days after purchase for a full refund of your payment.

The terms and conditions of this License describe the permitted use and users of each Licensed Copy of Stellar Phoenix (BSD). For purposes of this License, if you have a valid single-user license, you have the right to use a single Licensed Copy of Stellar Phoenix (BSD). If you or your organization has a valid multi-user license, then you or your organization has the right to use up to a number of Licensed Copies of Stellar Phoenix (BSD) equal to the number of copies indicated in the documents issued by Stellar when granting the license.

Scope of License

Each Licensed Copy of Stellar Phoenix (BSD) may either be used by a single person or used non-simultaneously by multiple people who use the software personally installed on a single workstation. This is not a concurrent use license.

All rights of any kind in Stellar Phoenix (BSD), which are not expressly granted in this license, are entirely and exclusively reserved to and by Stellar Information Systems Ltd. You may not rent, lease, modify, translate, reverse engineer, decompile, disassemble or create derivative works based on Stellar Phoenix (BSD) nor permit anyone else to do so. You may not make access to Stellar Phoenix (BSD) available to others in connection with a service bureau, application service provider or similar business nor permit anyone else to do so.

Warranty Disclaimers and Liability Limitations

Stellar Phoenix (BSD) and all accompanying software, files, data and materials are distributed and provided AS IS and with no warranties of any kind, whether expressed or implied. In particular, there is no warranty for the quality of data recovered. You acknowledge that good data processing procedure dictates that any program including Stellar Phoenix (BSD) must be thoroughly tested with non-critical data before there is any reliance on it and you hereby assume the entire risk of all use of the copies of Stellar Phoenix (BSD) covered by this License. This disclaimer of warranty constitutes an essential part of this License. In addition, in no event does Stellar authorize you or anyone else to use Stellar Phoenix (BSD) in applications or systems where its failure to perform can reasonably be expected to result in a significant physical injury or in loss of life. Any such use is entirely at your own risk and you agree to hold Stellar harmless from any and all claims or losses relating to such unauthorized use.

General

This License is the complete statement of the agreement between the parties on the subject matter and merges and supersedes all other or prior understandings, purchase orders, agreements and arrangements. This License shall be governed by the laws of the State of Delhi, India. Exclusive jurisdiction and venue for all matters relating to this License shall be in courts and for a located in the State of Delhi, India and you consent to such jurisdiction and venue. There are no third party beneficiaries of any promises, obligations or representations made by Stellar herein. Any waiver by Stellar of any violation of this License by you shall not constitute nor contribute to a waiver by Stellar of any other or future violation of the same provision or any other provision of this License.

Copyright © 1995-2010 by Stellar Information Systems Ltd. All rights reserved.

Technical Support

Our Technical Support professionals will give solutions for all your queries related to Stellar Products.

You can either **Call Us** or **Go Online** to our support section
<http://www.stellarinfo.com/support/>



Support Helpline



Monday – Friday [24 Hrs. a day]

USA (Toll free - Pre Sales Queries)	-	1-866-554-2512
USA (Post Sales Queries)	-	1-315-220-6245
UK (Europe)	-	+44-207-993-2293
Germany	-	+49-180-110-105-0051
Worldwide	-	+91-921-395-5509
Skype id	-	stellarsupport



Online Help

[Chat Live](#) with an Online technician

Search in our extensive [Knowledge Base](#)

[Submit Ticket](#) (If our Knowledge Base does not answer your question)

Login and view [Ticket Status](#) (If you already have a valid Ticket with you)

[Download Documents](#) on Product Usage (For Registered members only, i.e, user with login ID. If you are an unregistered user, please visit <http://stellarinfo.com/esupport/users/login.php> to create login ID)